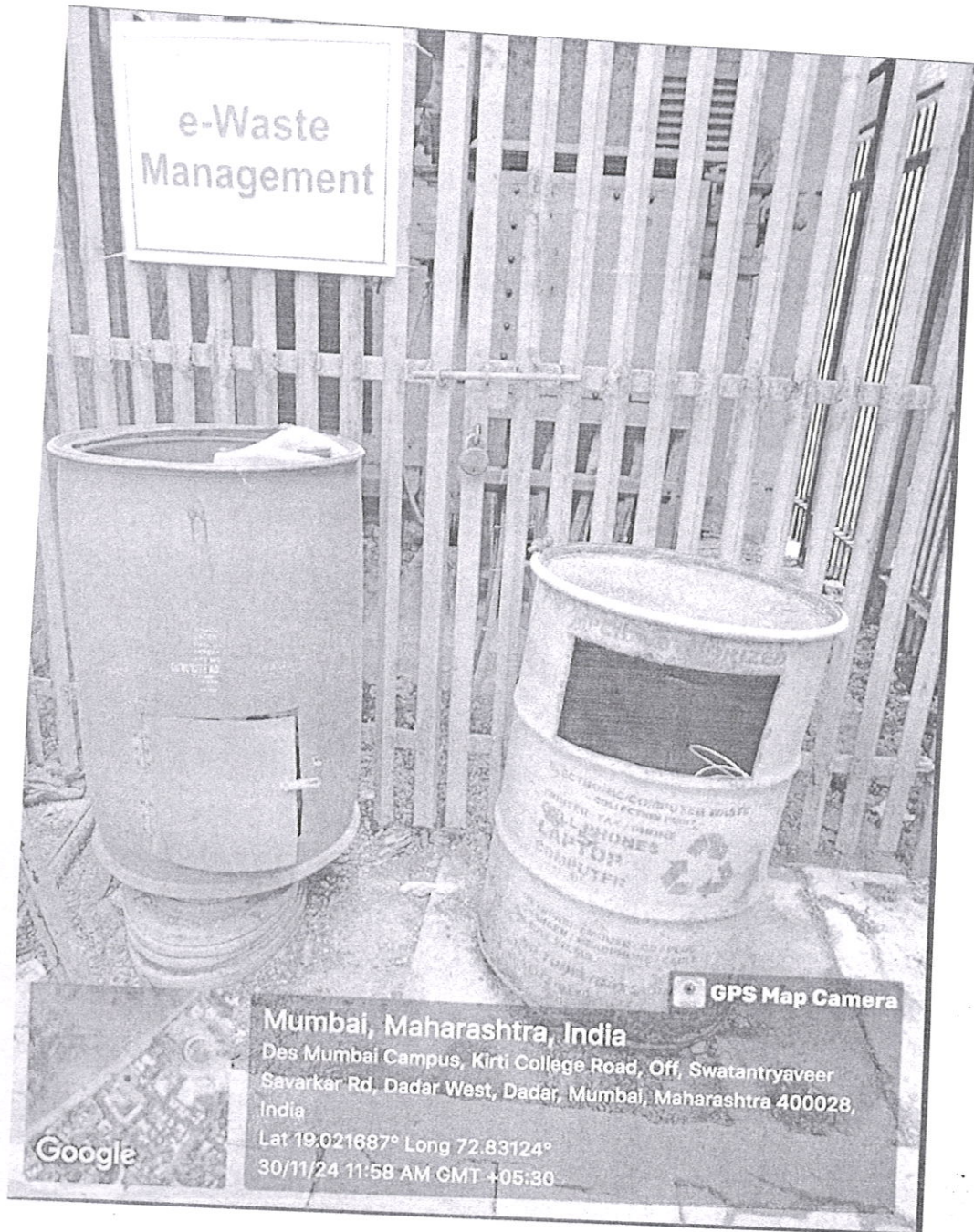


7.1.3: Describe the facilities in the Institution for the management of the following types of degradable and non-degradable waste.



Omaly
In-Charge Director
DES'S NMITD

NAVINCHANDRA MEHTA INSTITUTE OF TECHNOLOGY AND DEVELOPMENT

DES Mumbai Campus, Kirti College Road, Off- Veer Sawarkar Marg, Dadar (W), Mumbai-400 028.

Tel.: 022-62764582/83/84 | Website: www.nmitd.edu.in | E-mail: director.nmitd@despune.org

Approved by AICTE, DTE and Affiliated to University of Mumbai.

NAAC Accredited: B++ | MCA Programme Accredited by NBA



DES's NMITD Green Campus Policy-2023-24

Sr. No.	Particulars	Details
1.	Description	The policy will make sure to keep the Institute's campus eco-friendly.
2.	Scope	Institute's campus
3.	Objectives	<ol style="list-style-type: none"> 1. To promote the concept of green campus and its sustainability. 2. To instil environmentally conscious behaviours amongst all stakeholders.
4.	Statement of policy	Implementing eco-friendly practices amongst all stakeholders will promote sustainability and conservation, leading to a greener and pollution-free campus.
5.	Procedure	<ol style="list-style-type: none"> 1. Recycling of wastewater, solid waste, and E-waste in the campus 2. Heavy sound vehicles are banned in the campus. 3. Prohibition of plastic usage on campus. 4. Encouragement of digital documentation to reduce paper usage. 5. Observance of a monthly "No Vehicle Day." 6. Campaign for organic awareness education and training to promote sustainability on campus. 7. Encouraging the utilization of bicycles, battery-powered vehicles for local transportation, and carpooling to reduce fuel consumption. 8. Maintenance of a plant nursery with various plant species across the campus. 9. Implementation of infrastructure aimed at reducing carbon emissions.
6.	Approved By	IQAC Coordinator and Head of the Institute

Dr. Anita Bobade
Dr. Anita Bobade

I/C Director DES's NMITD



**In-Charge Director
DES'S NMITD**



Dr. Rasika Mallya
Dr. Rasika Mallya
IQAC Coordinator